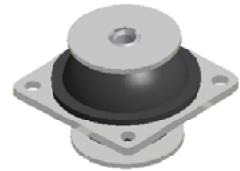
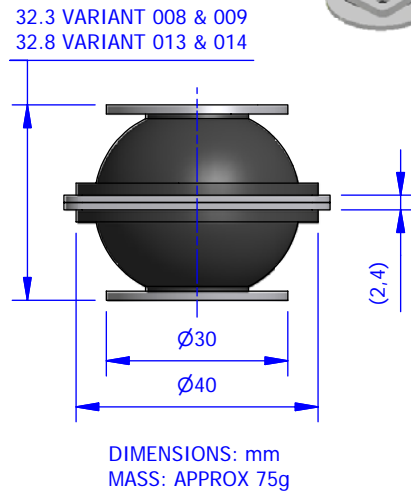
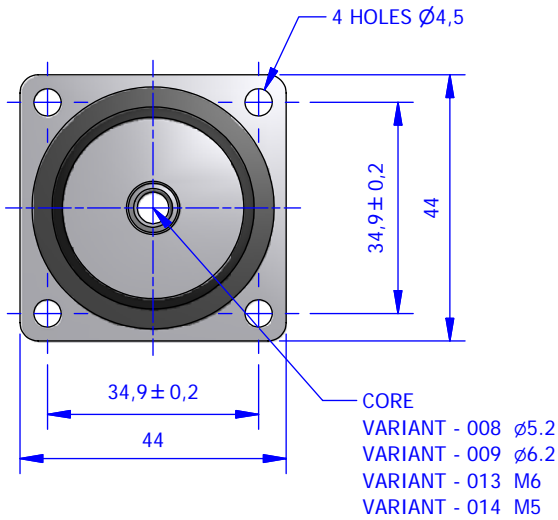
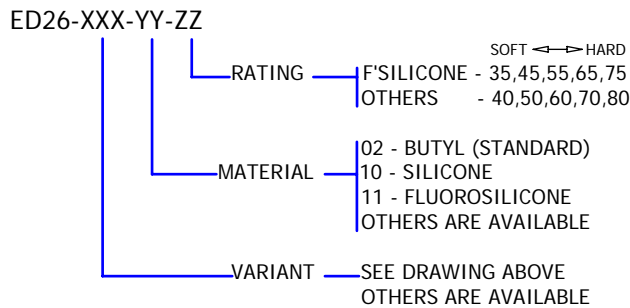


ED26 LIGHT DUTY PLATE MOUNT



NUMBERING SYSTEM



RATING (kg PER MOUNT = $\frac{\text{Mass of Unit}}{\text{Number of Mounts}}$)

PART NUMBER	LOAD PER MOUNT (Kg)	GRAPH
ED26 - XXX - YY - 40	1.8 - 4.5	T
ED26 - XXX - YY - 50	2.5 - 6.0	V
ED26 - XXX - YY - 60	3.5 - 9.0	W
ED26 - XXX - YY - 70	5.0 - 13	X
ED26 - XXX - YY - 80	7 - 18	Y
ED26 - X2X - YY - 80	12 - 30	Z

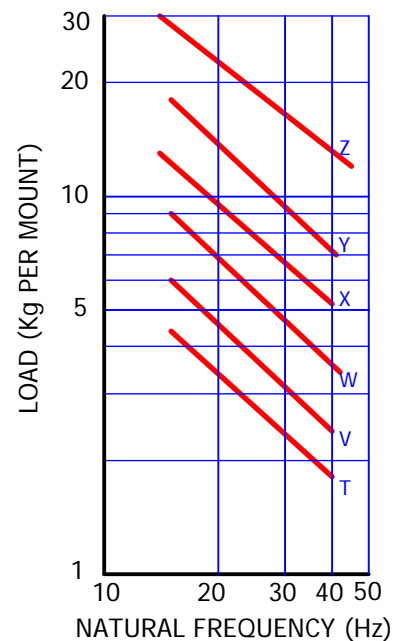
MATERIALS

ELASTOMER - SPECIFIED BY PART NUMBER
 METAL - BRIGHT ZINC PLATED MILD STEEL
 OTHERS ARE AVAILABLE

DEFLECTION CAPABILITY

VERTICAL (AXIAL) \pm 4 mm
 RADIAL \pm 4 mm

TYPICAL PERFORMANCE (VERTICAL)



engineering dynamics

DESIGN > MANUFACTURE > BESPOKE > PROTOTYPE > STANDARD

Anti Vibration Mounts - Vibration Isolators - Shock Isolators
 Vibration Testing - Vibration Fixtures - Rubber Mouldings

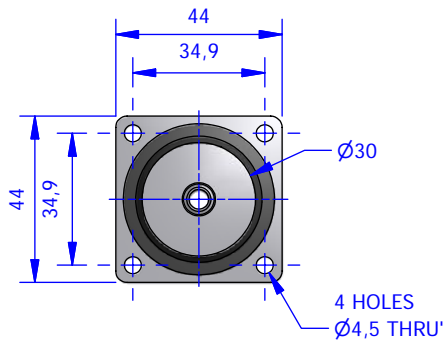


MANUFACTURED
 IN THE UK

VIBRATION • SHOCK • ISOLATION • TESTING

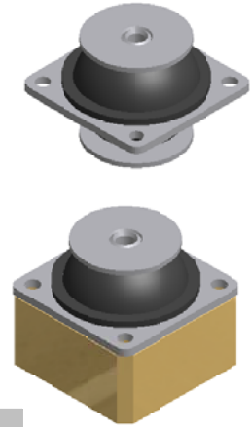
Watt Close, East Portway, Andover, Hants SP10 3TG Tel +44(0)1264 350778 Fax +44(0)1264 334215
 www.engdynamics.co.uk info@engdynamics.co.uk

ED26 LIGHT DUTY PLATE MOUNT

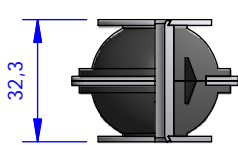


ED26 STANDARD RANGE

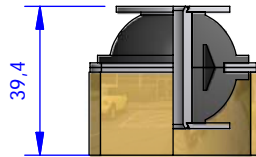
PART NUMBER ED26-XXX-YY-ZZ
 XXX VARIANT (SHOWN)
 YY ELASTOMER MATERIAL
 ZZ ELASTOMER HARDNESS
 SEE DATA SHEET FOR MORE DETAILS



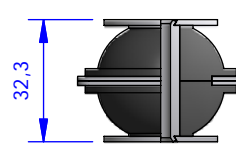
BORE Ø5.2 THROUGH



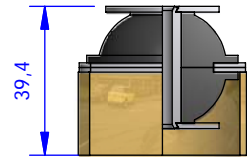
ED26-008



ED26-108

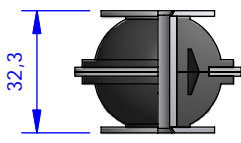


ED26-028

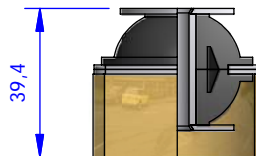


ED26-128

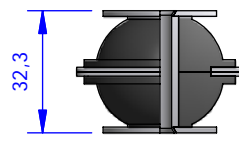
BORE Ø6.2 THROUGH



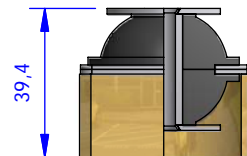
ED26-009



ED26-109

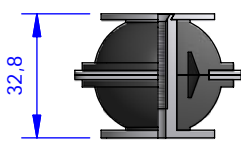


ED26-029
& ED26-012

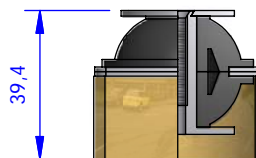


ED26-129
& ED26-112

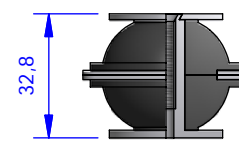
BORE M5 x 25 DEEP



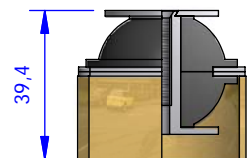
ED26-014



ED26-114

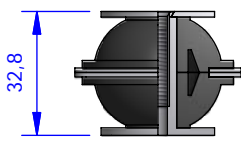


ED26-024
& ED26-011

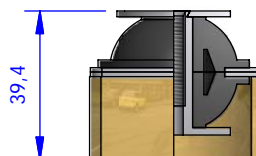


ED26-124
& ED26-111

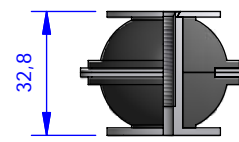
BORE M6 x 25 DEEP



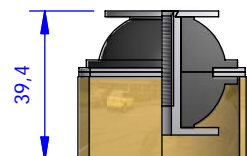
ED26-013



ED26-113



ED26-023



ED26-123



engineering dynamics

DESIGN > MANUFACTURE > BESPOKE > PROTOTYPE > STANDARD

Anti Vibration Mounts - Vibration Isolators - Shock Isolators
 Vibration Testing - Vibration Fixtures - Rubber Mouldings



MANUFACTURED
 IN THE UK

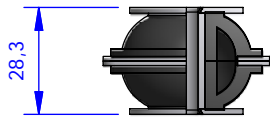
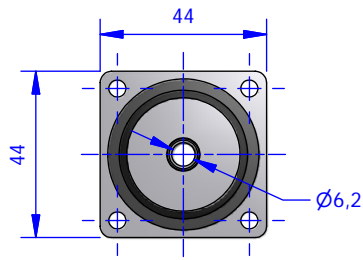
VIBRATION • SHOCK • ISOLATION • TESTING

Watt Close, East Portway, Andover, Hants SP10 3TG Tel +44(0)1264 350778 Fax +44(0)1264 334215

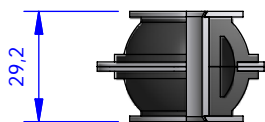
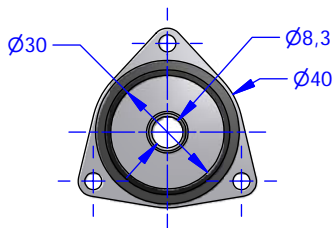
www.engdynamics.co.uk info@engdynamics.co.uk

ED26 LIGHT DUTY PLATE MOUNT

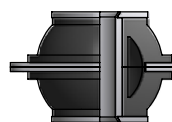
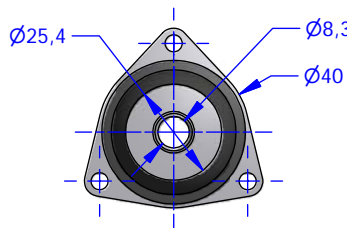
BESPOKE VARIANTS



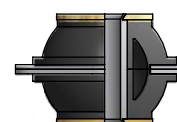
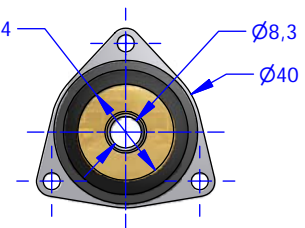
ED26-003



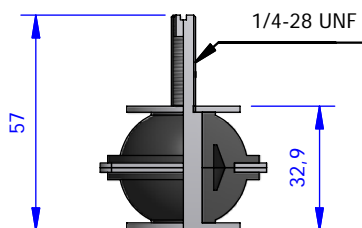
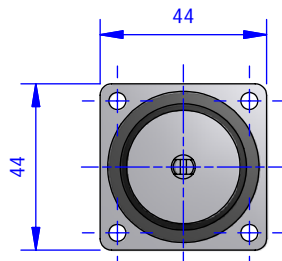
ED26-201



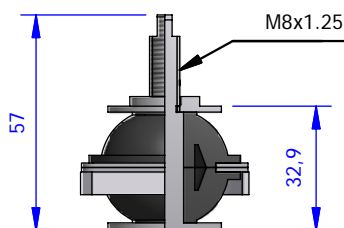
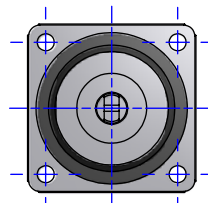
ED26-202



ED26-203



ED26-401



ED26-402



engineering dynamics

DESIGN > MANUFACTURE > BESPOKE > PROTOTYPE > STANDARD

Anti Vibration Mounts - Vibration Isolators - Shock Isolators
Vibration Testing - Vibration Fixtures - Rubber Mouldings



MANUFACTURED
IN THE UK

VIBRATION • SHOCK • ISOLATION • TESTING

Watt Close, East Portway, Andover, Hants SP10 3TG Tel +44(0)1264 350778 Fax +44(0)1264 334215
www.engdynamics.co.uk info@engdynamics.co.uk