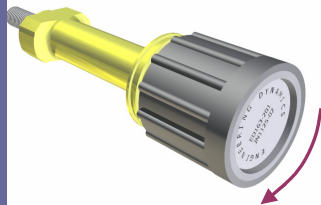


JN1125-01 and JN1125-02

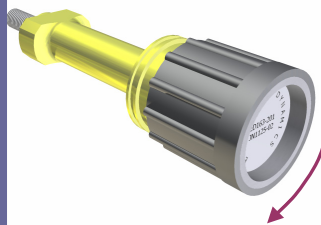
LOCKING THE DEVICE



STEP 1

The Knob should be proud of the label, indicating that the device is **UNLOCKED**.

Twist the knob clockwise to tighten the connector.

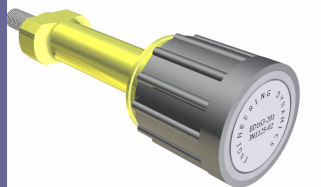


STEP 2

When the correct Torque is achieved, continue to twist the knob clockwise to engage the lock mechanism.

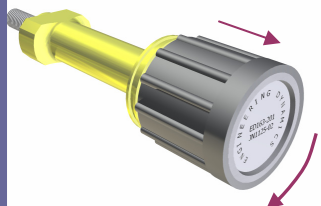
The knob will move outwards and then inwards as it is twisted. The label will not rotate.

Do NOT pull out, or push in, the knob during this action.



STEP 3

When the lock mechanism is fully engaged the label will be flush with the end of the knob, indicating that the device is **LOCKED**.

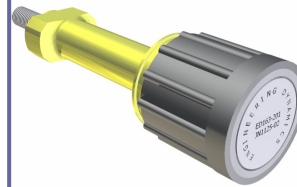


If the Label is NOT flush

If the lock mechanism is not fully engaged the label will not be flush with the end of the knob.

To fully engage the lock mechanism, pull the knob and twist clockwise a little more so that the locking teeth mesh correctly.

UNLOCKING THE DEVICE



STEP 1

The Knob should be flush with the label, indicating that the device is **LOCKED**.

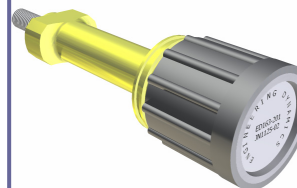
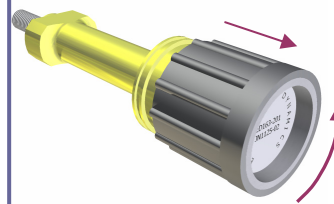
STEP 2

Pull the knob to release the lock mechanism and twist anticlockwise.

Continue to twist anticlockwise to disengage the lock mechanism.

The knob will move out and then return inwards.

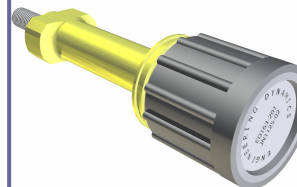
The label should not rotate. Occasionally the label will rotate, indicating that the device is in the Self Locked Mode. See below.



STEP 3

The knob should be proud of the label, indicating that the device is **UNLOCKED**.

Occasionally the Knob will be flush with the label, indicating that the device is in the Self Locked Mode. See below.



STEP 4

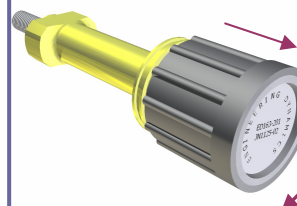
Continue to twist anticlockwise to separate the connector.

Unlocking the Device from Self Locked Mode

This mode can occur when the tension in the Shaft has reduced.

To reinstate the shaft tension, pull the Knob and twist clockwise (do not apply excessive force). Release the knob to re-engage the lock mechanism.

Repeat from **STEP 2**



IN THE EVENT OF A FAILURE

In the event of a failure, the device can be disassembled to enable removal.

Prise off the label.

Using an appropriate tool, unscrew the exposed boss. Beware as this retains springs which may be ejected when released.

Remove the knob and springs to reveal flats on the main shaft. These can be used to remove the device.

COPYRIGHT © 2009 ENGINEERING DYNAMICS (SOUTHERN) LTD

Registered at Companies House Cardiff as Engineering Dynamics (Southern) Ltd. Registration No 1517290

Registered Office: Parmenter House, 57 Tower Street, Winchester, Hants, SO23 8TD

April 2009

JN1125